

# Clarion 7 and Clarion.Net

video: 1

Robert Zaunere  
CEO  
SoftVelocity Inc.

# IDE

A unified IDE for:

- Clarion Win32 (versions 4, 5, 6 and 7!)
- Clarion.Net
  - WinForms
  - WebForms
  - Mobile devices

# Migration

- It's a painless move from Clarion 6 to Clarion 7

Why?

- Every source code change applied to version 6 is immediately applied to version 7
- Every change in a template or class is also applied

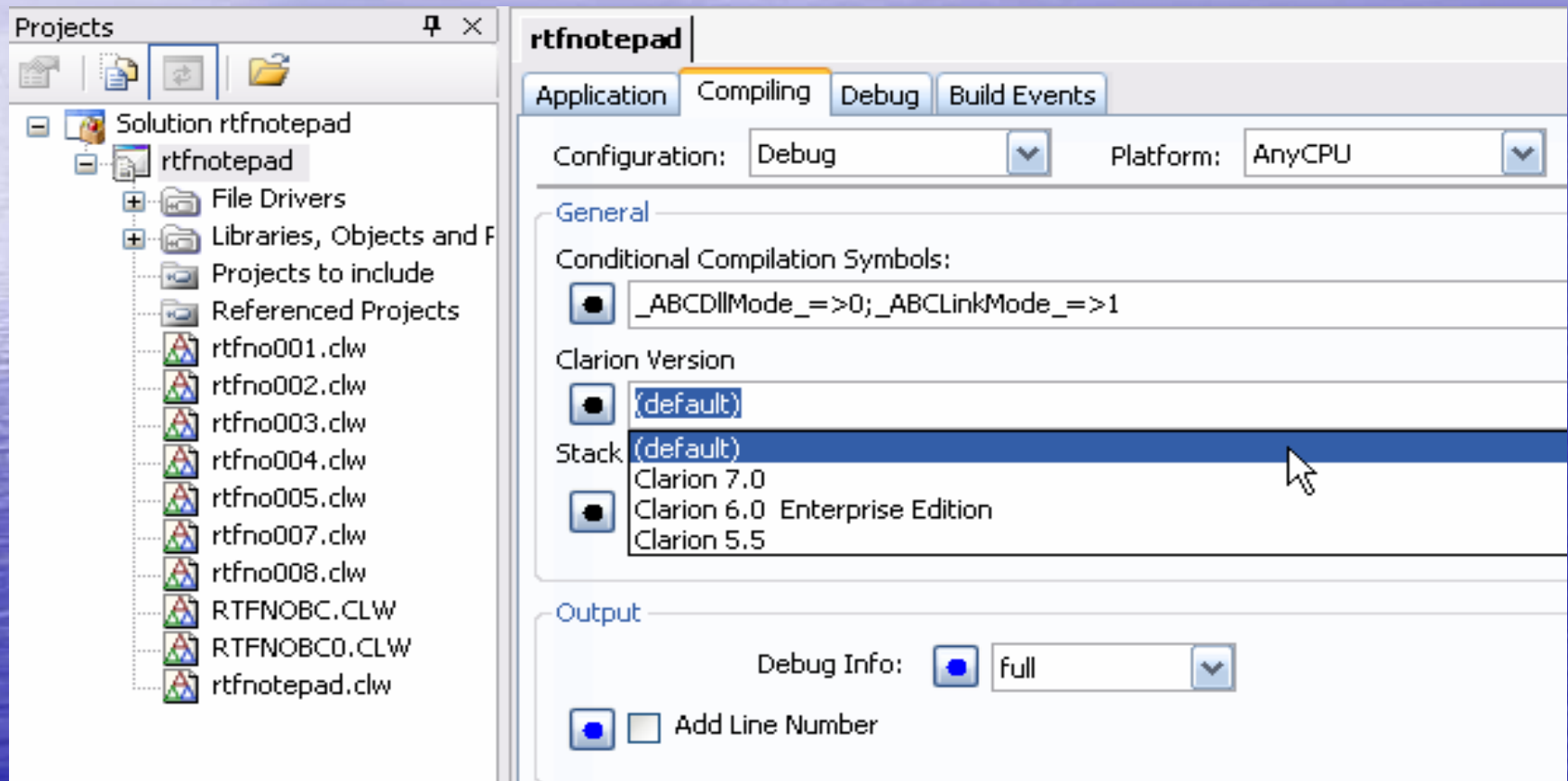


# To Migrate or Not?

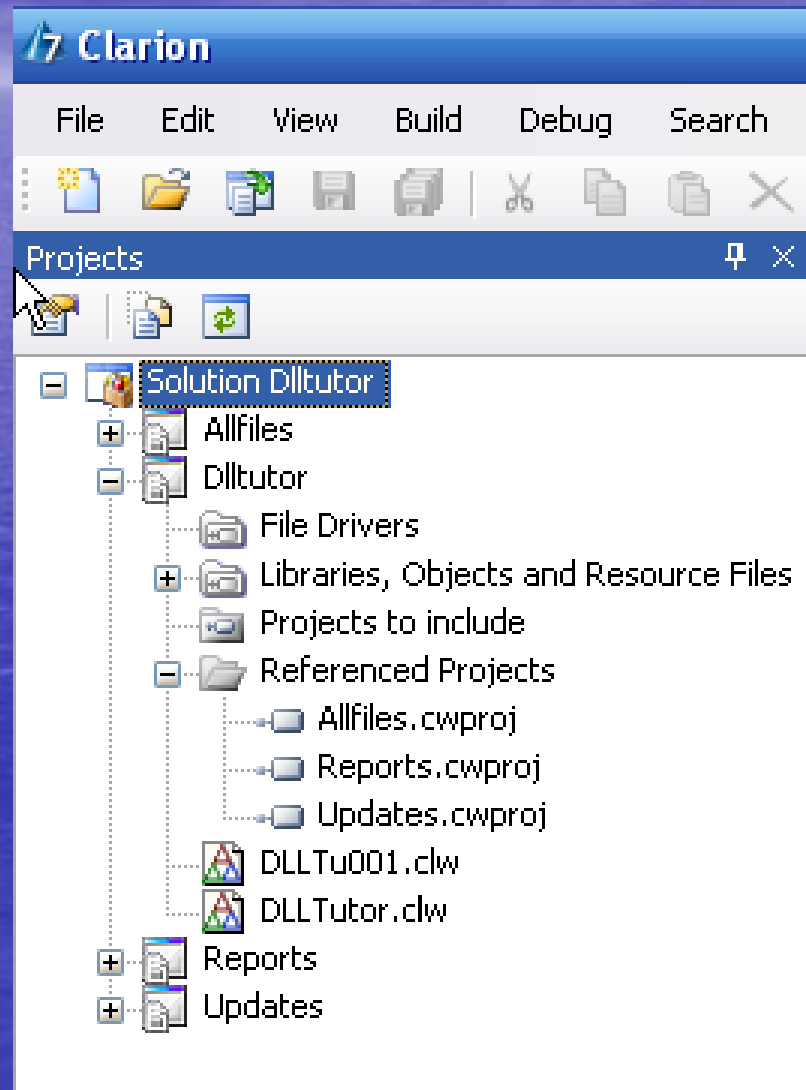
## New Project System lets you decide

- Load any Project file or .App from an earlier Clarion version and you can:
  - Generate the code using the prior versions templates
  - Compile using the compiler from the prior version
  - Link using libraries from the prior version

# Project System

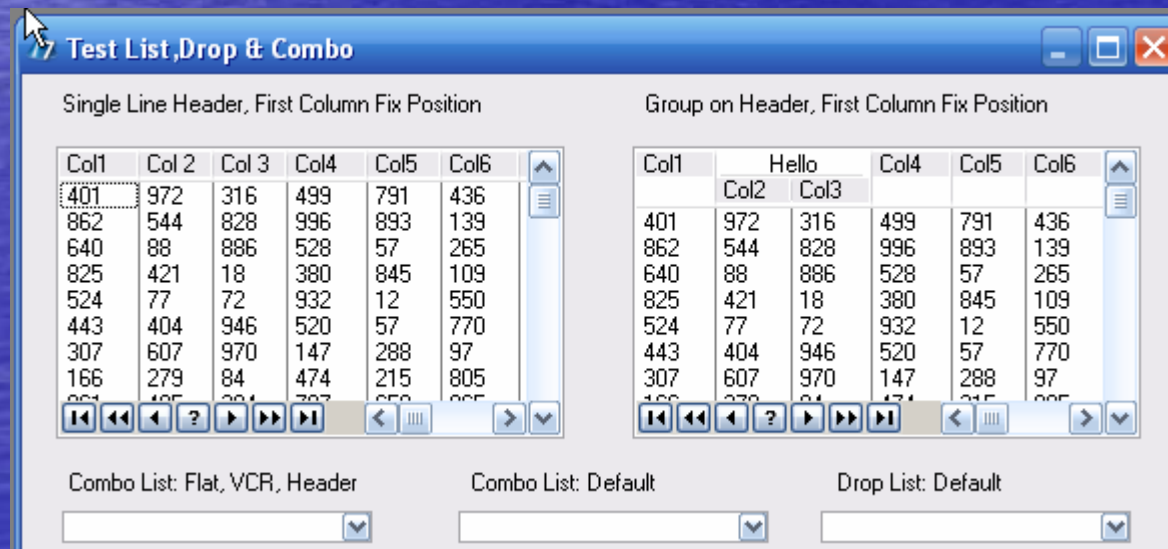
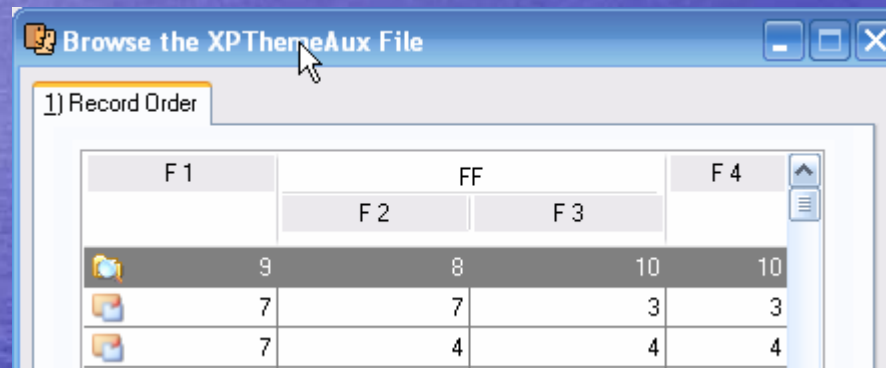


# Project System – Solutions



# New UI Model

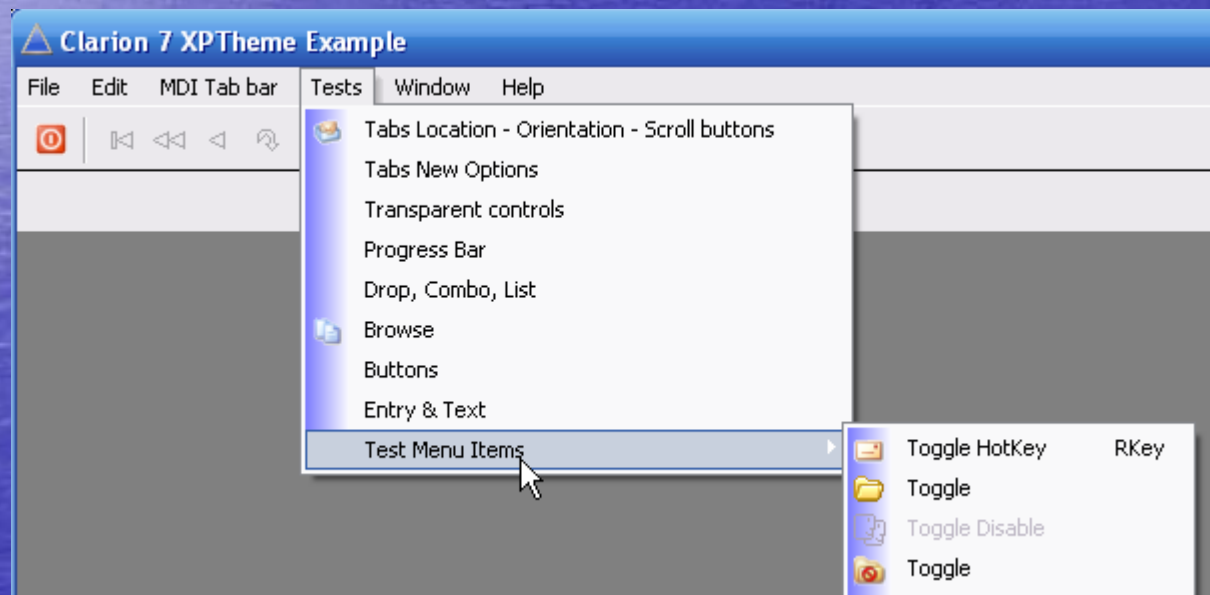
## XP Styled Listbox, Drop. Combo





# New UI Features

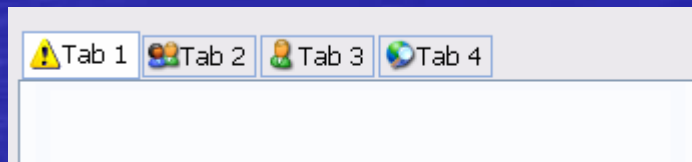
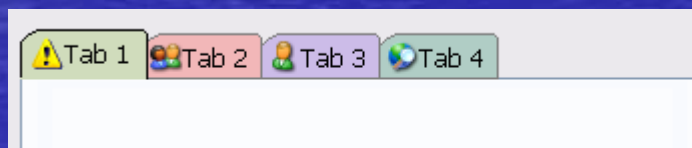
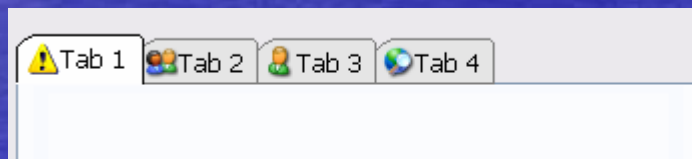
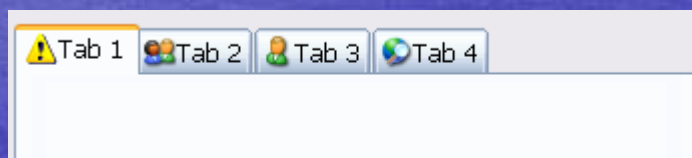
## Office XP/2003 styled menu





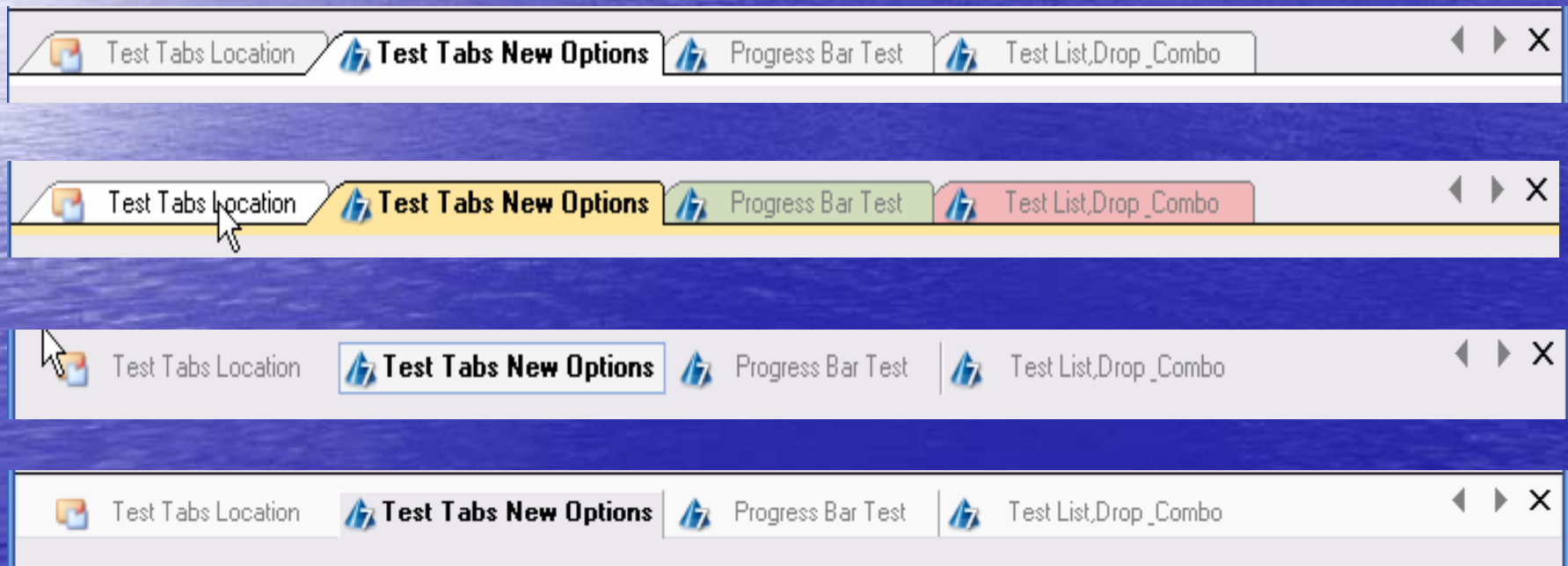
# New UI Features

Sheet / Tab styles (XP, 2003, 2003, Boxed)



# New UI Features

## Tabbed MDI Windows (Four styles)



# Clarion 7 UI – Demo

- Demo of C6 side-by-side with C7 (same application)



# And more UI

- Other UI Features in version 7.0
  - A new Toolbox template that creates an XP style toolbox like those used in Office XP/2003 complete with gradients and grips
  - New algorithm for creating disabled Icons or creating grey-scaled versions
  - Support for PNG image format
  - RichEdit 4.1
    - support for clickable embedded URLs in the rich text

# IDE – Dictionary Editor

- Powerful grouping features to allow 'subset views' of the tables in the Dictionary
- Display Graphical views of tables and relationships  
\* Enterprise Edition
- A new column view that displays every field from all tables and allows global edits
- Cascade any field change throughout the entire Dictionary
- Open multiple tables for simultaneous editing
- Arrange your own personal layout for editing of Fields, Keys and Relationships
- Powerful new List view with Edit-in-place that allows you to specify which Dictionary attributes to display
- Generate Reports on history of changes, etc in PDF, XML or HTML



# IDE – Application Generator

- **Application Generator**
  - Completely re-factored for the fastest possible code-generation
  - New and improved views for the Procedures tree and Classes
  - Powerful new search functions
  - Simultaneously Open multiple app files



# IDE – Project System

- Create 'Solutions' which can contain any number of individual Projects. This allows you to build any number of Executables and DLLs from a single solution.
- Build both Debug and Release configurations from a single solution.
- Ability to build any Project with any installed version of Clarion back to Clarion 4, using the corresponding versions' compiler, templates and include files specified in the Redirection file.
- Automate builds of multiple solutions from within the IDE or from the command line

# IDE – Source Editor

- **New productivity features**
  - Code folding
  - Built-in Class Browser
  - Procedure and class method navigators
  - Search/Replace across projects and solutions
  - User selected Font and Font Size
  - Access the Dictionary from within hand-coded projects

# IDE – Templates

- Several new styles 'Toolbox' support



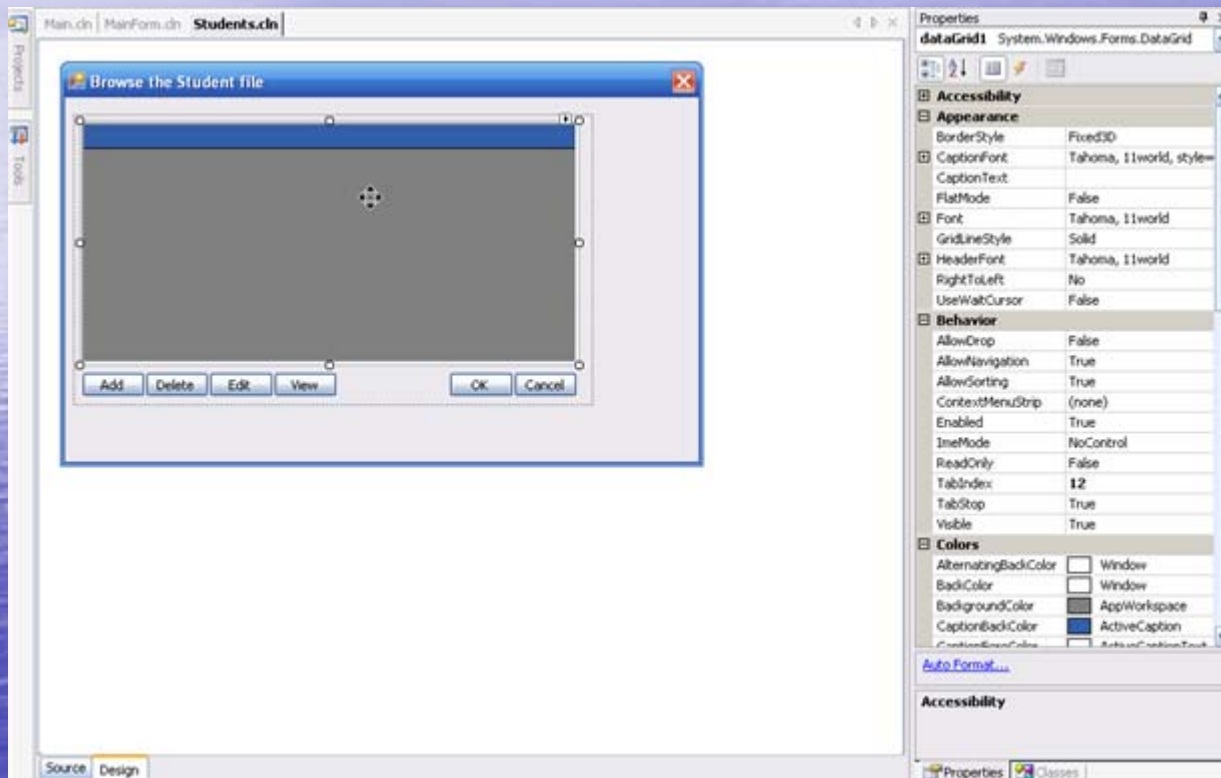
- New Tabbed-MDI Template
- New Class Template
- Other supprises



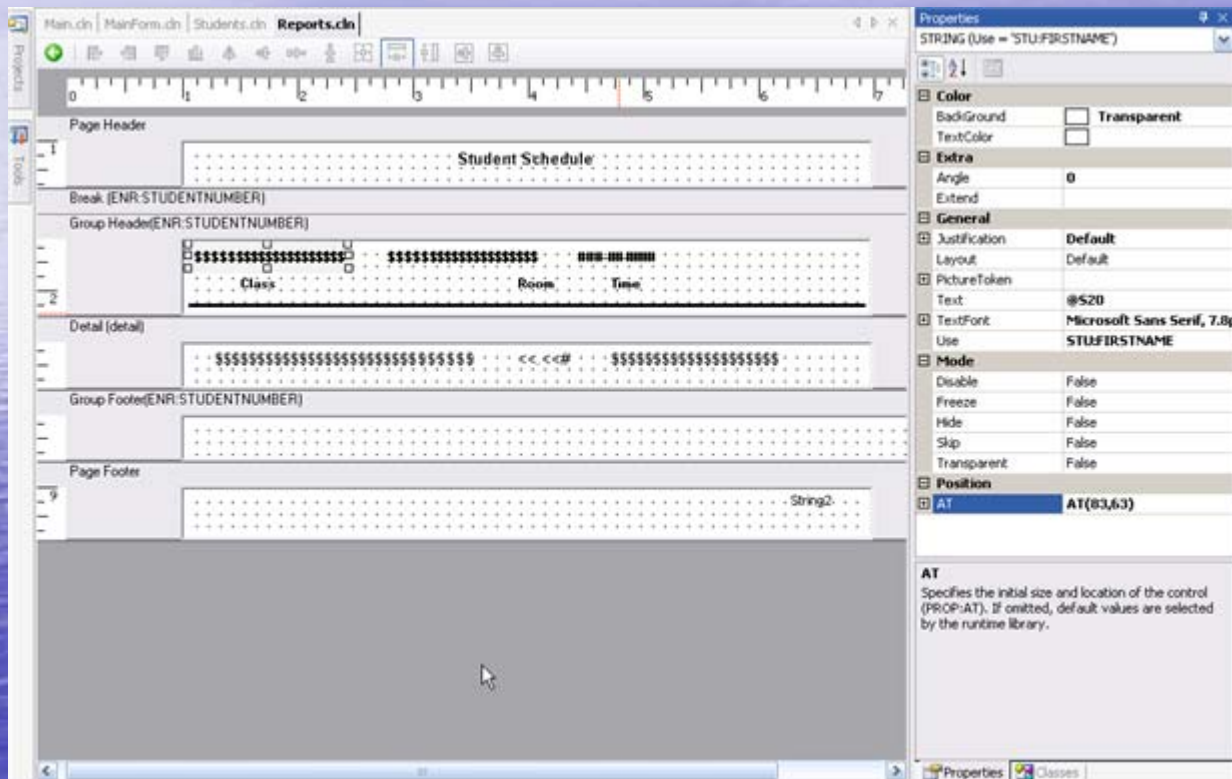
# Window/Report Designers

- New Window and Report Designers
- The same designers are used by Clarion7 and Clarion.Net
- Many new productivity features

# Window Designer



# Report Designer





# Final Word

Clarion 7 key features:

- **Advancements in all components of the IDE**
- **Modern Look-and-feel for your applications**
- **Behavior and performance consistent with Clarion 6 = little or no migration issues**
- **Ability to work with applications that remain in prior Clarion versions from within the new IDE**

The background is a deep blue gradient, transitioning from a lighter blue at the top to a darker blue at the bottom. A bright, glowing sun is positioned on the left side, creating a lens flare effect. A thin, white horizon line separates the sky from the water. The water is depicted with a textured, wavy surface.

**Thanks For  
Listening!**